



# FPT-42-110VAC SUBMITTAL

## Water Level High, Low and Low-Low Alarms

### **FIRE PROTECTION WATER LEVEL ALARMS**

**NEW MORE RELIABLE TECHNOLOGY by Waterline Controls® FOR SPECIFYING ENGINEERS WITH A TESTED & PROVEN TRACK RECORD in MRO APPLICATIONS for 10+ years.**

**Our controls can REPLACE ALL SENSOR & CONTROL TYPES in ALL water based applications.**

**We ARE NOT similar to float switches, capacitive, conductive, ultrasonic, or pressure transducers. We ARE more reliable, easy to operate, & last longer.**



## Features:

- 5 Year Limited Warranty
- NEMA 4x control enclosure
- Intuitive LED indicators
- Dry contact connections for BMS, BAS, or fire panel
- Fully automated by microprocessor
- Color coded sensor rods & wires for intuitive installation
- Test Push-button for output devices
- Power relays for valves, pumps, etc.
- Optional temperature sensor controlled relay
- Controls can be mounted in equipment room w/ sensor wired remotely
- Push-button for relay test
- Modular construction
- Extendable sensor probes

## Benefits:

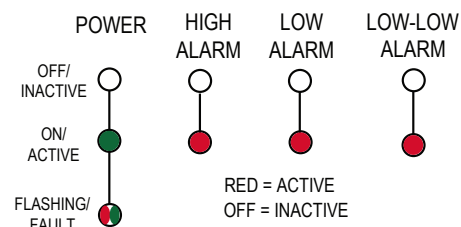
- Permanently eliminate float switches
- Less than 1% failure rate in the field
- Intrinsically safe - no high voltage in water
- Never needs recalibration
- Fully Commercialized
- Sensor will not plate, foul, or deteriorate
- Water quality does not matter
- Flexibility in design to meet any scenario
- Minimal maintenance
- Stand-alone controls
- Only moving parts are replaceable relays

# FPT-42-110VAC SUBMITTAL

## Water Level High, Low and Low-Low Alarms FIRE PROTECTION WATER LEVEL ALARMS

### FUNCTIONAL DIAGRAMS

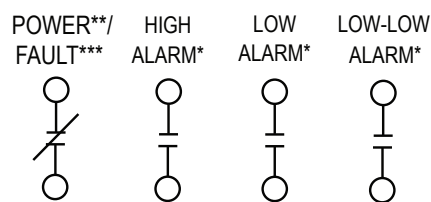
#### STATUS INDICATORS (LED)



The Power LED will be off on power loss, Green when powered on and Flashing on Fault conditions.

The Status Indicator LEDs will be Red when active and off when inactive.

#### LOW VOLTAGE DRY CONTACTS TO BUILDING AUTOMATION

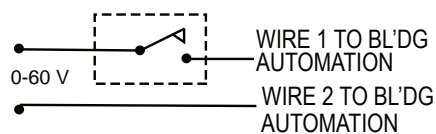


EACH DRY CONTACT IS RELAY (FORM A)  
SPST RATED MAX. 60V @ 0.5A

\*\*POWER = OPEN

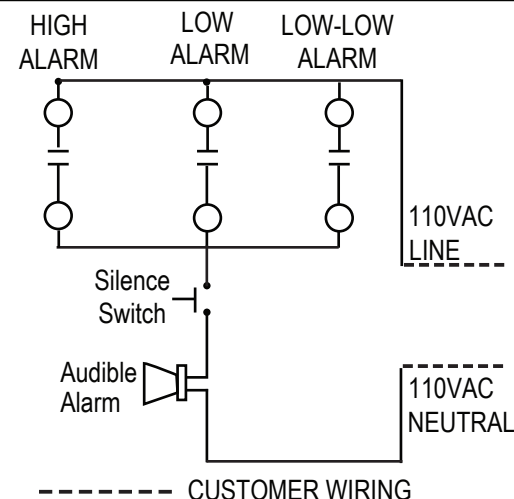
\*\*POWER LOSS = CLOSED

\*\*\*FAULT = ON/ OFF CYCLE



LOW VOLTAGE RELAYS (FORM A) SPST  
RATED MAX. 60V @ 0.5A

#### HIGH VOLTAGE POWER RELAY DRY CONTACTS



#### PRODUCT FUNCTION TRUTH TABLE

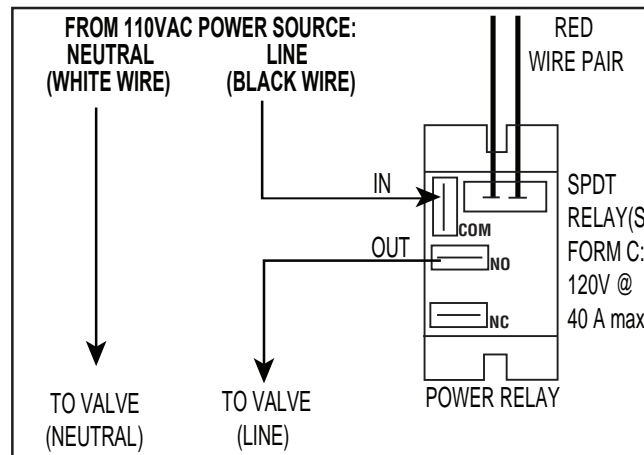
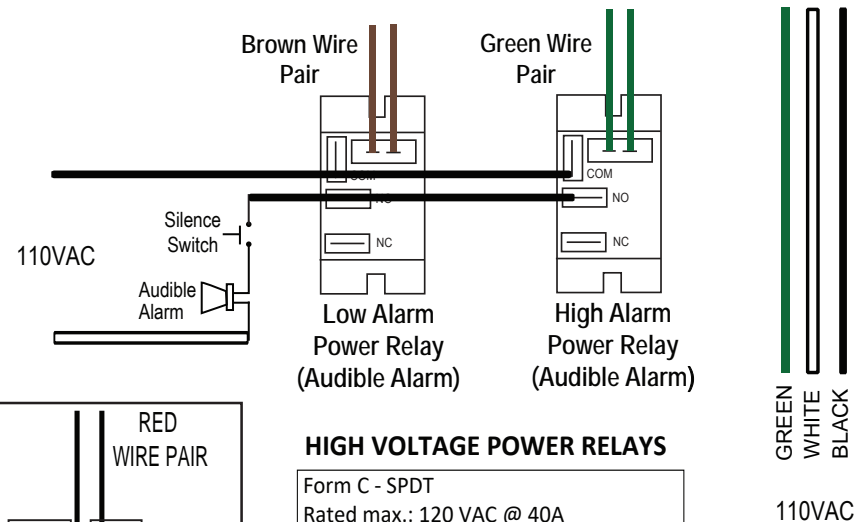
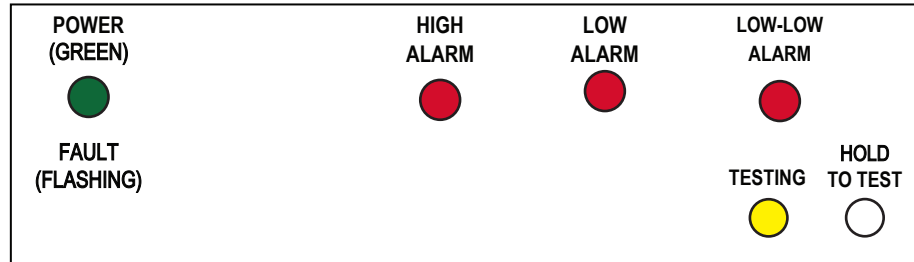
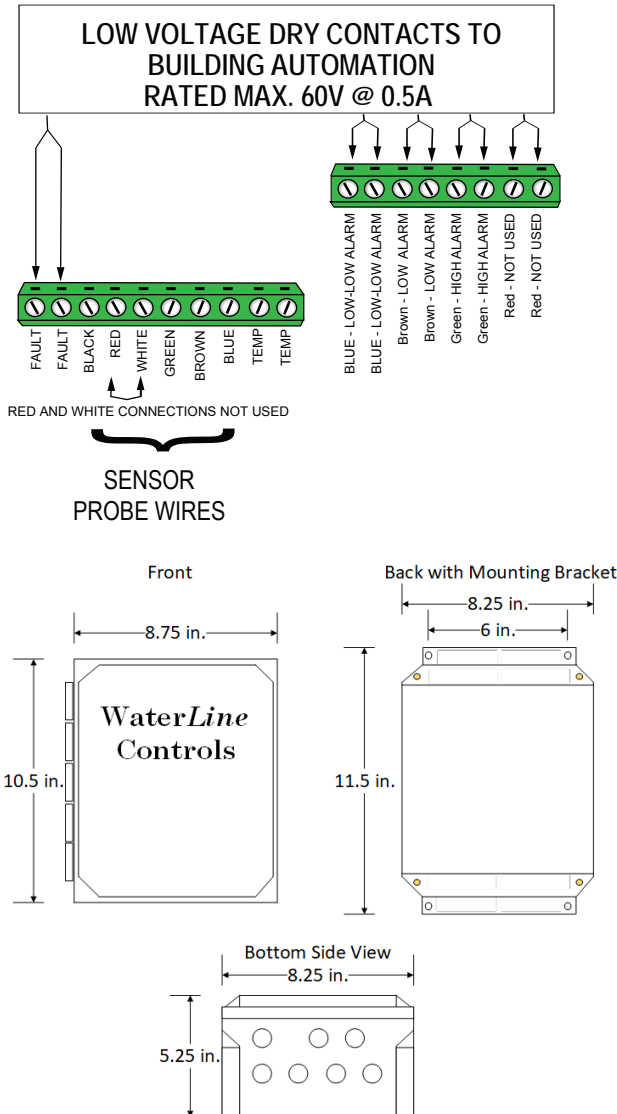
MODEL	BMS DRY CONTACTS						POWER RELAY				SELF TEST
	FAULT/ POWER LOSS	LOW-LOW ALARM	LOW ALARM	HIGH ALARM		BAS WIRES	LOW-LOW ALARM	LOW ALARM	HIGH ALARM		
FPT 42	X	X	X	X		8	X	X	X		X

Toll Free: 888-905-1892  
www.waterlinecontrols.com  
Email: info@waterlinecontrols.com

# FPT-42-110VAC SUBMITTAL

## Water Level High, Low and Low-Low Alarms FIRE PROTECTION WATER LEVEL ALARMS

### PHYSICAL WIRING CONNECTIONS



#### HIGH VOLTAGE POWER RELAYS

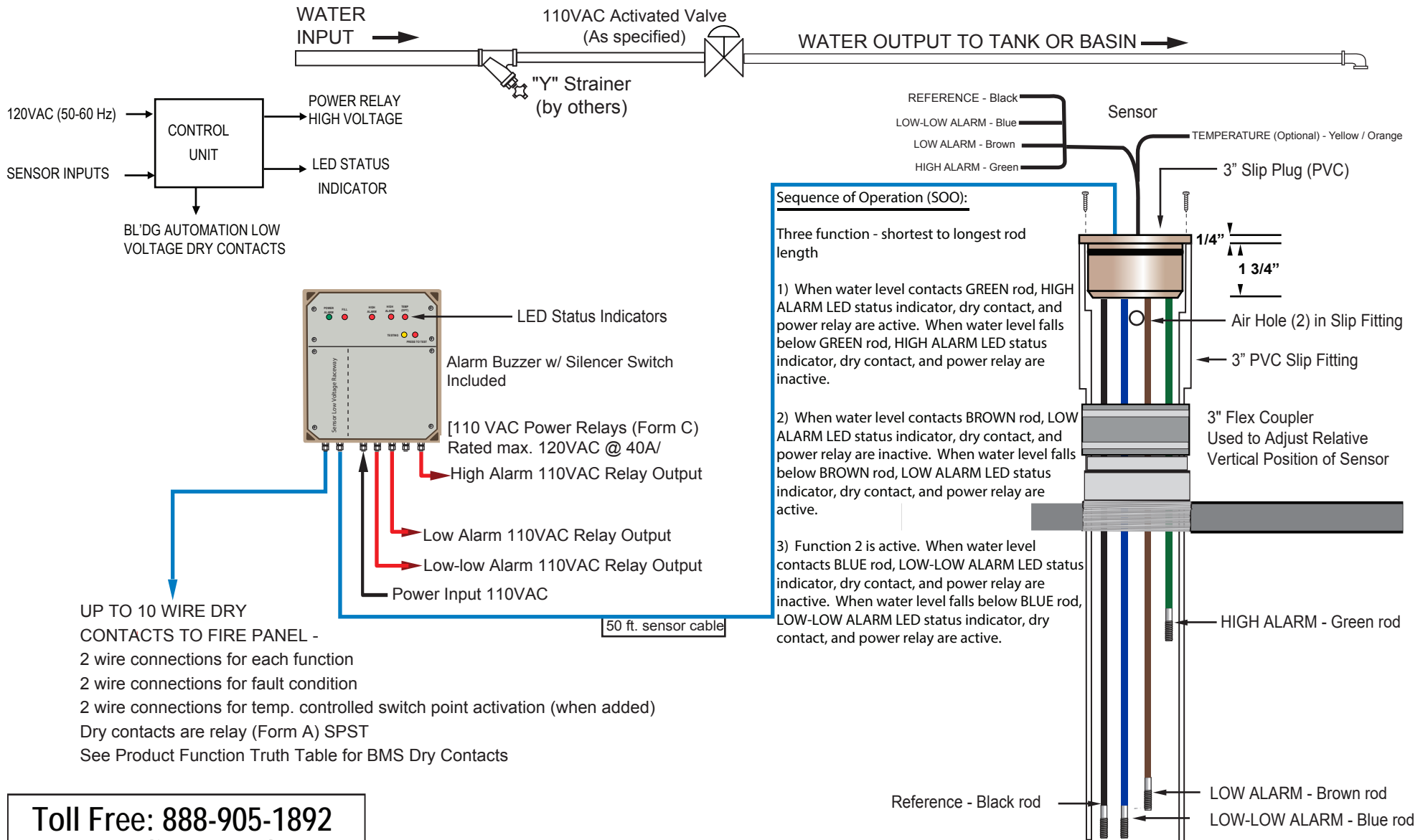
Form C - SPDT  
Rated max.: 120 VAC @ 40A  
All relays are typical  
All relay terminals are 1/4" male spade

**Toll Free: 888-905-1892**  
**www.waterlinecontrols.com**  
Email: info@waterlinecontrols.com

# FPT-42-110VAC SUBMITTAL

## Water Level High, Low and Low-Low Alarms

### FIRE PROTECTION WATER LEVEL ALARMS



UP TO 10 WIRE DRY CONTACTS TO FIRE PANEL -  
 2 wire connections for each function  
 2 wire connections for fault condition  
 2 wire connections for temp. controlled switch point activation (when added)  
 Dry contacts are relay (Form A) SPST  
 See Product Function Truth Table for BMS Dry Contacts

**Toll Free: 888-905-1892**  
**www.waterlinecontrols.com**  
**Email: info@waterlinecontrols.com**

1. 3" PVC pipe of length greater than or equal to length of longest rod
2. Adjust by moving 3" PVC Pipe upward/ downward, then tighten clamp

# Electronic Water Level Management Systems

## 5 Year Limited Warranty - *WaterLine* Controls®

The 5 Year Limited Warranty is extended to the original consumer purchaser of this *WaterLine* Controls manufactured by *WaterLine* Controls, Scottsdale, Arizona. *WaterLine* Controls warrants the unit, including all the parts and components thereof, to be free of defects in material and workmanship. This warranty does not cover plumbing or normal replacement items and parts, including gaskets and O-rings. *WaterLine* Controls does not cover improper installation of the unit or its parts, but our instruction manual is complete enough to solve any issues - particularly if the manual is read before rather than after the installation. If you have any questions including installation questions regarding your *WaterLine* Controls unit, please feel free to contact us. Be sure to include the serial number of your unit.

The 5 Year Limited Warranty commences on the date of installation. All parts discovered to have manufacturing defects within 12 months of installation shall be replaced at no charge to the customer. Any defect discovered after 12 months following the installation, shall have a fee of \$275.00 for replacement of the items discovered to be defective up to and including the fifth year.

This 5 Year Limited Warranty does not apply if the failure is caused or contributed by any of the following: power failure or reduction of power supplied to the unit, unusual atmospheric conditions, improper handling, improper storage, winter freezing, abuse, improper installation, unsuitable application, lack of reasonable and necessary maintenance, natural disasters, or repairs/alterations made or attempted by other than *WaterLine* Controls or an Authorized Technician approved by *WaterLine* Controls. *WaterLine* Controls will repair or replace, at its option, a unit or part proved to be defective within the warranty period and under the conditions of this 5 Year Limited Warranty.

*WaterLine* Controls • PO Box 12544 Scottsdale • Arizona 85260

The consumer must deliver or ship the unit or warranty parts freight prepaid to *WaterLine* Controls. Authorization to return an item to *WaterLine* Controls must be obtained from *WaterLine* Controls Customer Service Department at 888-905-1892. For further assistance with this process please contact the Customer Service Department. Be sure you insure your shipment against loss or damage in transit.

*WaterLine* Controls is not responsible for the cost of removal of the unit or parts of the unit, damages due to removal, or any other expenses incurred in shipping the unit or parts to or from *WaterLine* Controls or its closest Authorized Service Center or the installation of the repaired or replaced unit. The consumer must bear these expenses.

THIS 5 YEAR LIMITED WARRANTY IS IN LIEU OF ALL OTHER WARRANTIES, EXPRESSED OR IMPLIED, INCLUDING THE IMPLIED WARRANTIES OF MERCHANTABILITY AND FITNESS FOR A PARTICULAR PURPOSE AND ALL SUCH OTHER WARRANTIES ARE DISCLAIMED EXCEPT TO THE EXTENT ANY IMPLIED WARRANTY MAY BE IMPOSED BY STATE CONSUMER LAW. ANY SUCH IMPLIED WARRANTY IMPOSED BY STATE CONSUMER LAW IS LIMITED IN DURATION TO ONE (1) YEAR FROM THE DATE OF INSTALLATION. IN NO EVENT SHALL *WATERLINE* CONTROLS BE LIABLE FOR INCIDENTAL OR CONSEQUENTIAL DAMAGES OR ANY NATURE OR KIND OR FOR DAMAGES TO PERSONS OR PROPERTY, INCLUDING ANY DAMAGE RESULTING FROM THE USE OF THE UNIT WITH A SUBSTANDARD WATER CIRCULATION OR SUPPLY SYSTEM.

Some states do not allow limitations on how long an implied warranty lasts, or the exclusion or limitation of incidental or consequential damages, so the above limitations may not apply to you.

This limited warranty is valid only in the United States of America and Canada